



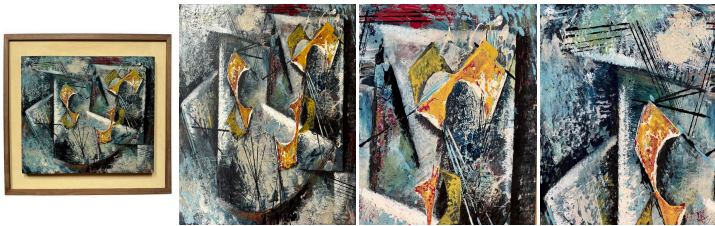
Abstract Expressionist Oil Painting on Board by
Mabel Hutchinson

As low as **\$1,200**

In stock

SKU

LU654313102962



Details

This fascinating work may initially appear abstract, with geometric shapes, flat tints, abrupt transitions, and subtle use of colors that interact in a dynamic dialogue. However, a different vision emerges upon closer contemplation, delving us into raw and unfiltered emotions. While abstraction aims to break free from reproducing reality, a powerful connection to reality arises, creating a tension-filled field akin to a scream. Love and art converge in this shared emotional terrain, where encountering a work of art becomes a shared breath. In this fusion of abstraction and expressionism, Mabel Hutchinson has not only created a visual masterpiece. Her creation suggests that art transcends mere composition, serving as a portal to explore the tumultuous facets of our existence using the metaphor of a chaotic sea. As you gaze upon the canvas, you are transported to the heart of a turbulent ocean, where a sailing vessel battles the relentless fury of a storm. Its yellow sails flutter uncontrollably, succumbing to the relentless gales, their fragments breaking free. The artist successfully borrows codes of abstraction to construct a striking representation of reality. The brushwork is charged with nervous energy, reminiscent of inclement weather and inner struggles. The depiction of the sea churns with agitation, contrasting with the boat's curved hull and the rigid lines of crisscrossed masts. Angular forms, applied with stencils or outlined by cardboard, imbue the background with depth. The careful application of hues heightens the contrasts between the various elements within the scene, with shades of blue, dark grey, and the pristine white of the foamy crests of a raging sea.

BIO

Mabel Christina Bennett Hutchinson (1903-1999) was a multifaceted artist known for her contributions to both painting and sculpture. Born on a farm in Blackfoot River Valley, Idaho, on February 13, 1903, she embarked on a creative journey



that spanned the 20th century. In 1927, Mabel married Milon Hutchinson, and together, they embarked on an adventurous journey to southern California to pursue their dreams. Her artistic education unfolded at Riverside Jr. College, where she honed her skills and delved deeper into the world of art under the guidance of Rex Brandt. Mabel's artistic subjects were as diverse as her experiences. Her canvas captured the essence of farm life and the serene beauty of coastal scenes in the Orange County area. Through her brush, she painted not just images but moments in time, preserving the agricultural heritage and coastal allure of her surroundings. In 1959, she transitioned from the realm of painting to that of wood construction, where her creative spirit continued to flourish. She crafted enchanting totems and decorative doors, demonstrating her versatility and ability to infuse life into various forms of artistic expression. Mabel Hutchinson's life and art were deeply intertwined with California's cultural landscape. She called Capistrano Beach her home from the late 1940s, immersing herself in the vibrant artistic community of the region. Her creative journey was a testament to her enduring passion for the arts and her commitment to exploring new horizons. As her remarkable life drew near the end, Mabel Hutchinson returned to her roots in Firth, Idaho, where she peacefully passed away on December 18, 1999. Her legacy endures through her art, which continues to captivate and inspire, preserving the beauty of the world she skillfully depicted.

REFERENCE NUMBER: LU654313102962

PERIOD: Mid-20th Century

CONDITION: Excellent

MEASUREMENTS: Height: 20.25" Width: 27" Depth: 1.5"

COUNT: 1

MATERIAL: Board, Oil

CREATOR: Mabel Christina Bennett Hutchinson