



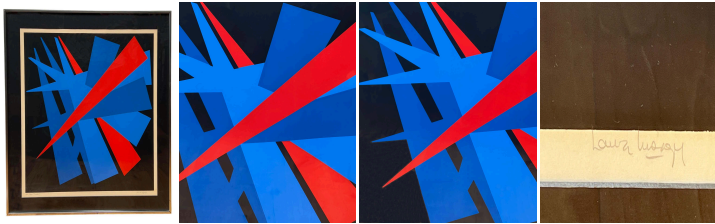
"Crash" Blue and Red Constructivist Lithograph

As low as **\$480**

In stock

SKU

LU654311868162



Details

The title of this square lithograph is "Crash," a reflection of the chaotic and dynamic energy captured within the artwork. The striking contrast between the bold blue edgy 3D triangular shapes overlapping each other suggests a feeling of disorder that is unsettling. The lithograph is set against a black background that enhances the overall thrilling effect of the piece. It sits in a thin chrome frame, numbered 285/300, and is signed, though the signature is illegible.

REFERENCE NUMBER: LU654311868162

PERIOD: 1980-1989

CONDITION: Excellent

MEASUREMENTS: Height: 24.25" Width: 24.25" Depth: 0.88"

COUNT: 1

MATERIAL: Lithograph