



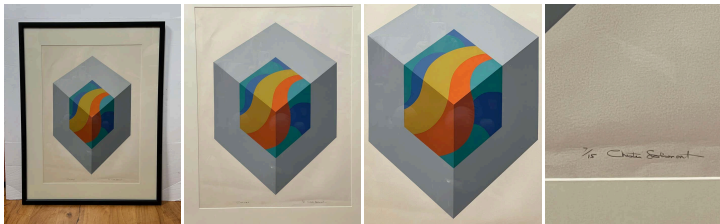
Cube #3" Constructivist Lithograph by Chester Solomont

As low as \$550

In stock

SKU

LU654311297152



Details

Chester Solomont 1907-1989, was an artist in design and sculpture. He created a number of limited-edition abstracts, as well as interpretive sculptures.

He was born in Boston, then moved to Southern California where he opened his own advertising and print business, and continued to make art in his spare time.

In this particular piece, Chester Solomont added another level of vibrations and verticality by using a limited colour palette inserted into the main figure. Cubes are highly symbolic objects that can represent physical boundaries while also symbolising stability or order within chaotic systems. By including cubical references in their work, minimalists and constructivists such as Solomont embrace these deeper meanings while simultaneously exploring ideas related to balance and movement. When presented in three-dimensional form like in this lithography numbered 7/15, we have an opportunity to explore how different angles of vision alter the perception of the cube's shape – creating illusions and allowing us to question what we perceive as 'real' versus 'artificial' reality.

REFERENCE NUMBER: LU654311297152

PERIOD: Late 20th Century

CONDITION: Good

MEASUREMENTS: Height: 35.5" Width: 28" Depth: 1"

COUNT: 1

MATERIAL: Lithograph

CREATOR: Chester Solomont