



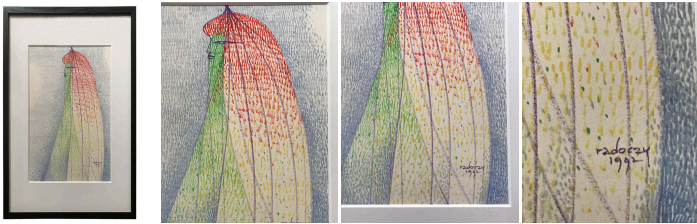
Portrait of a Woman Pointillist Gouache by Albert Radoczy #3

As low as **\$350**

In stock

SKU

LU825820491172



Details

Stylized gouache in a pointillist technic of a woman (probably his wife who was his favorite subject) This work is part of a series of 4. On a wall together, they would have a strong effect. See the following listings. Signed A. Radoczy, March 1992. Albert Radoczy was a master at exploring the female form. Throughout his career, his drawings and paintings depicted women with images ranging from realistic to whimsical, sensual to spiritual, and from ethereal to hallucinatory. Albert later opened a noteworthy design firm, Habitat Associates with Warren Nardin and later Paul Mayen. Habitat designed modern furniture, lighting, and architectural elements such as fabrics, wallpaper, and accessories. They worked directly with architects and designers and were included in "Good Living" - a series of exhibitions and publications curated by the Metropolitan Museum of Art. His solo work has also been exhibited at the Whitney Museum of American Art (Annual Exhibit 1962), the Brooklyn Museum (Print Exhibit 1962), the MoMA Lending Collection (1965), and the NJ State Museum.

REFERENCE NUMBER: LU825820491172

PERIOD: Late 20th Century

CONDITION: Excellent

MEASUREMENTS: Height: 21" Width: 16.75" Depth: 1"

COUNT: 1

MATERIAL: Painted Paper, Wood

CREATOR: Albert Radoczy (Painter)

COUNTRY OF ORIGIN: United States