



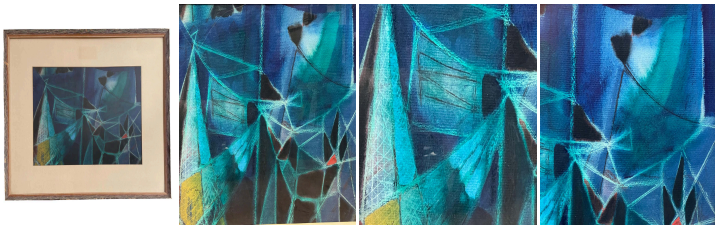
Abstract Pastel and Gouache Painting by Edward Wolfe

As low as \$550

In stock

SKU

LU825827204992



## Details

This abstract painting features lines of gradient blues triangles entangled like festive garlands . Cubism influenced the combination of triangle shapes of different sizes in this artwork . Edward Wolfe is known for semi-abstract figure, still life, landscape and portrait painting and drawing, some cubism.

Edward Wolfe (29 May 1897 – 8 July 1982) was a British artist who was a Portrait, flower, and landscape painter, mainly in oil, illustrator, and draughtsman in pen and ink and pencil. Born in Johannesburg, South Africa, Wolfe came to England and studied at the Slade School 1916–8, having in his native country worked for periods as a child actor and for a jeweler, during which time he had his first serious art lessons with the British painter George Smithard. Whilst at the Slade was invited by Nina Hamnett to join Roger Fry's Omega Workshops, with which he first exhibited in 1918, the same year that he initially showed with LG. One-man show at Leon Levson's Gallery, Johannesburg, in 1920, having returned in 1919 to paint there; the proceeds helped to fund his return to London, which then became his base, although he was throughout his life to travel in search of the sun.

REFERENCE NUMBER: LU825827204992

PERIOD: Late 20th Century

CONDITION: Good

MEASUREMENTS: Height: 25.5" Width: 31.5" Depth: 0.75"

COUNT: 1

MATERIAL: Paper, Wood, Painted

CREATOR: Edward Wolfe (Painter)  
Copyright by Galerie Sommerlath - All  
Rights Reserved



---

COUNTRY OF ORIGIN: England