



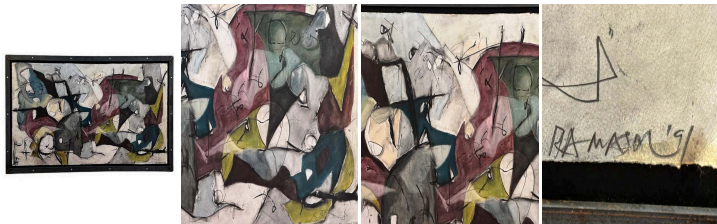
Abstract signed and dated Acrylic Painting in
Metal Frame

As low as **\$2,600**

In stock

SKU

LU654314454432



Details

An abstract landscape painting on board, signed and dated '91 in the lower right, presented in a black metal frame.

The black in this painting, far from being a void or absence, reveals itself to be of infinite depth, holding the key to the work's dynamics. It acts as a conductor, giving the work coherence. Its presence—both in delimited sets filled with its opacity, sometimes acting as a contour, and in introducing small filaments—is decisive in creating a visual rhythm.

When confronted with abstract art, the brain seeks to compensate for the absence of identifiable forms by activating other registers of perception. Some works, like this one, seem to resonate chords to emit vibrations. There is a sensation of touching the immaterial and addressing the spiritual part of being. This quasi-synthetic quality of abstract art is not only a metaphor; it is lived as a subjective, authentic experience. What abstraction moves away from in substance, it recaptures in essence through the stimulation of reverie and imagination.

The painting sits in a solid black metal frame inlaid with steel lozenges.

REFERENCE NUMBER: LU654314454432

PERIOD: Late 20th Century

CONDITION: Good

MEASUREMENTS: Height: 31.75" Width: 56.75" Depth: 1"

COUNT: 1

MATERIAL: Metal, Acrylic