



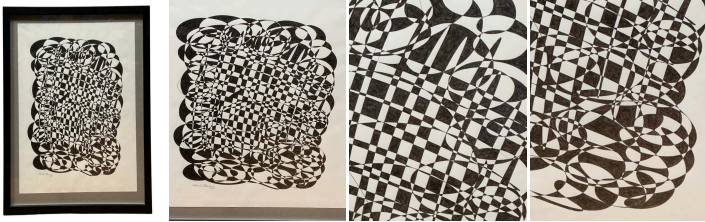
Black and White Abstract by Ned Schultz

As low as **\$490**

In stock

SKU

LU654314053352



Details

The power of an image cannot be received at a glance. To understand it fully, we should interpret it, letting ourselves be lulled by its balance.

The architecture of his drawing becomes a framework for projecting an absolute relationship between black and white, entire and negative space, presence and absence, reality and illusion. The meditative order derived from it simultaneously creates an illusory perception of movement in space. As viewers, we perceive the depth of interlocking geometric forms, rounded shapes in dialogue with square and triangular forms. Our attention then turns to structure rather than color, revealing a mysterious rhythm in the geometry: ostensibly static designs give way to dynamic experiences.

Schultz constructs an experience - a realm where order is meticulously woven from chaos. It orients us to oscillate between these two states of existence. Schultz's work illuminates our understanding of the perceptual paradox within geometric abstraction: a spectacle that, despite its impeccable rapport and symmetrical design, initiates interpretive illusion among those who perceive it. Like the calm eye of a storm, Schultz's original Op Art drawing gives way to a vibratory movement of patterns and hidden images.

The work is signed by the artist and dated 2005.

REFERENCE NUMBER: LU654314053352

PERIOD: 2000-2009



CONDITION: Excellent
MEASUREMENTS: Height: 19.8" Width: 17.25" Depth: 0.75"
COUNT: 1
MATERIAL: Ink, Watercolor