



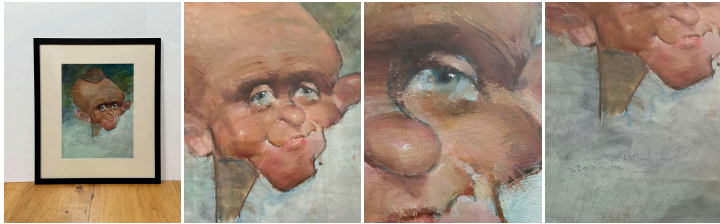
Caricatural Portrait - Gouache on Paper by Max Turner

As low as **\$550**

In stock

SKU

LU654312457372



Details

In this gouache portrait, Max Turner has opted for caricature. Caricature is a form of art that involves exaggerating a person's physical features to create a humorous or satirical effect. This form of art can be used to poke fun with tenderness at a person and highlight their perceived flaws or quirks or to entertain and amuse.

Is this portrait representing a well-known person or just a friend for whom Turner indulged in this parodic study? It may be just one casework given to its students to distort reality, draw it, and then return to the essential: figure drawing and building a representation as precise as possible of a model.

As in the art of portrait caricature, Turner typically focused on the expression of the face, emphasising and distorting specific characteristics such as the skull wearing a little hat, nose, protruding ears, and close-set eyes. The forehead is greatly exaggerated, and a skinny neck supports the head. Turner's artistry brings forth an intense delicacy in this portrait, specifically by contrasting the softness of the expression given by the blue eyes with the overall aspect of the gentle monster.

Max Turner, born in 1925 in Omaha, Nebraska, had a remarkable artistic journey. After serving in the U.S. Navy during World War II, Max settled in Southern California and pursued a career in silkscreen work. An encounter with artist Hal Reed changed his path as Max joined an art class taught by Reed and became friends. Impressed by Max's talent, Hal offered him a teaching position. Max's passion for painting and sculpting grew, with his portraits drawing comparisons to Nicolai Fechin's work.



In his 70s, Max focused solely on sculpting, creating about 100 full-size sculptures sold to prestigious clients and Hollywood studios. He continued teaching painting classes at the California Art Institute alongside renowned artists. Max authored several books showcasing his drawings and paintings, highlighting his mastery of capturing human expression. His works continue to be cherished by art enthusiasts, leaving a lasting impact.

REFERENCE NUMBER: LU654312457372

PERIOD: 1960-1969

CONDITION: Excellent

MEASUREMENTS: Height: 21.38" Width: 17.38" Depth: 0.5"

COUNT: 1

MATERIAL: Gouache

CREATOR: Max Turner