



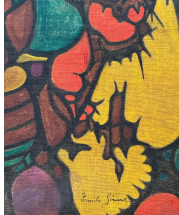
Colourful Abstract Gouache on Burlap by French Painter Emile Gerard

As low as **\$950**

In stock

SKU

LU654311945422



Details

At the core of this colourful gouache on burlap appears a simple composition with large areas of colours responding to the use of darker hues to establish the backdrop. These hues act as an essential element to enhance the contrast and outline the brightest colours. This play of darkness and vivid shades is the lifeblood of this piece. Forms appear, almost figurative, lines, curves, shapes, and values giving the mind the opportunity to freely conceptualise and transform them into tangible expressions that come alive and take shape hitting the canvas as a heartbeat.

Good abstract art has a message, or a concept, or gives an immediate feel of something, activating the inner works of the mind viewers. Even though the technique could appear simplistic and random, it emerges from a place of deep thought and great meaning. Born in 1932, Émile Gérard was largely inspired by the 1950s growing up. Abstract Expressionism prevailed in the 1950s as a primary method of painting. The two words placed side by side together evoke the aim of artists from this current to make substantial art.

REFERENCE NUMBER: LU654311945422

PERIOD: Late 20th Century

CONDITION: Good

MEASUREMENTS: Height: 39" Width: 22" Depth: 0.75"

COUNT: 1

MATERIAL: Gouache

CREATOR: Emile Gerard