



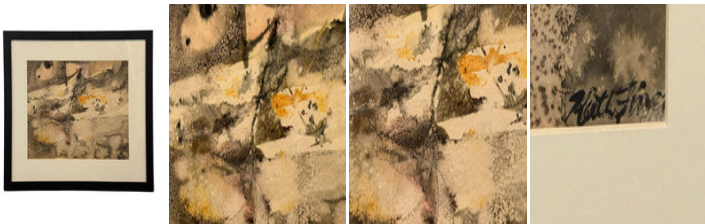
Earthy tone Abstract Watercolor by Keith Finch

As low as **\$850**

In stock

SKU

LU654316732032



Details

This acrylic painting is a richly textured abstract study in hushed ochres, grays, and parchment tones. The work layers delicate washes of pale beige and slate gray, punctuated with crystalline speckling and soft yellow accents. The black ink signature rests in the lower right in a subtle cursive: "Keith Finch." There is no overt figuration, yet the composition possesses an evocative stillness—like a memory just beneath perception—grounded in texture, light, and the evocative tension of layered pigment.

Keith Bruce Finch was born in Holyoke, Colorado, in 1919. Finch was most active in Los Angeles in the 1950s and 1960s. His abstract watercolors were widely exhibited during this period. Finch taught at Otis Art Institute for many years. He has taught painting at UCLA, Kann Art Institute, and in his own studio. He has exhibited in all major American exhibitions and was one of the artists representing the United States at the Sao Paulo Biennial in 1955.

His paintings were included in the exhibition 'American Paintings 1945-57' at the Minneapolis Institute. His works are in many important public and private collections in Southern California and elsewhere. He died in Los Angeles on March 19, 1993.

REFERENCE NUMBER: LU654316732032

PERIOD: 1990s

CONDITION: Excellent

MEASUREMENTS: Height: 22.5" Width: 26.25" Depth: 0.75"

COUNT: 1



MATERIAL: Watercolor

CREATOR: Keith Finch