



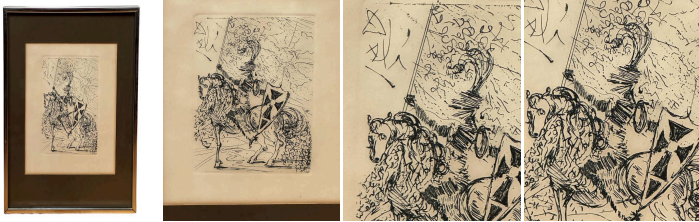
El Cid, Knight on a Horse, Original Etching by Salvador Dali

As low as \$1,300

In stock

SKU

LU654314592742



Details

Considered the epitome of the Surrealist movement, Salvador Dalí's work evokes both wonder and analytical intensity, leaving an indelible mark on the contemporary art world. His fresh take on Spain's historical and cultural heritage is illustrated by the lithograph "El Cid," produced in the 1960s as part of the "Five Spanish Portraits" series.

This lithograph, signed in the top left corner, depicts Rodrigo Díaz de Vivar, known as "El Cid," the semi-legendary hero of the Spanish Reconquista. Dalí isn't just a madcap artist whose works astonish and unsettle; he is also an incredible technician. In this piece, he uses precise, nervous gestures and rounded lines, along with hatching, to give opacity to the shapes like the one that forms the armor. These techniques capture the essence of the knight, activating black-and-white contrasts that highlight a duality between strength and finesse, reality and mythology. This work exemplifies Dalí's unique style, using playful traces to bring the character to life and varying line thicknesses to differentiate the background from the foreground.

"El Cid" is one of five portraits in Dalí's collection, alongside Don Quixote, Cervantes, Velázquez, and El Greco. Each work reflects a profound reverence for Spanish heritage and offers a free and fiery re-examination of national identity, illustrating the remarkable convergence between Dalí's aesthetic and the personalities he chose to represent.

Dalí's treatment involves close-to-reality figuration that incorporates visual metaphors. This approach goes beyond simple reproduction to offer a sophisticated commentary on heroism transcending time and space.

"El Cid" is a quintessential example of his mastery and exceptional status in the history of contemporary painting.



It comes with a certificate of authenticity from the "Nouvelle Gravure International de New York and Paris". (see picture)

REFERENCE NUMBER: LU654314592742

PERIOD: 1960-1969

CONDITION: Excellent

MEASUREMENTS: Height: 14.25" Width: 11.13" Depth: 1"

COUNT: 1

MATERIAL: Etching

CREATOR: Salvador Dalí