



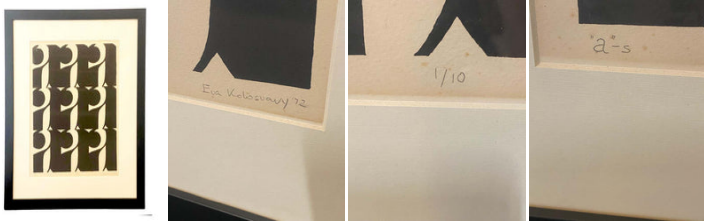
Geometric Black and White Lithograph by Eva Kolosvary-Stupler

As low as \$950

In stock

SKU

LU654316561582



Details

Signed by Eva Kolosvary in 1972, this lithograph print titled "a" 's and numbered "1/10" features a repeat pattern of the letter "a" in blank ink on paper. With nothing other than blank ink, this modern and minimalist abstract art print carries visual interest and depth without relying on color. This particular piece uses bold sweeping shapes and curves that evoke a sense of dynamism within the constraints of a repeating structure. Originally from Hungary, Kolosvary escaped Nazi Occupation and Soviet Rule, and eventually became formally educated at California State University Long Beach with her BA, MA, and MFA. Showcased across the country and currently in her home state of California, Kolosvary's work shows a depth of realism that is difficult to ignore. A great addition to any abstract collection.

About the Artist

Born in 1937 in Budapest as Éva Stein, Eva Kolosvary-Stupler survived the trauma of World War II in hiding with her mother and sister while her father was sent to forced labor. Following the Hungarian uprising in 1956, she fled to Switzerland with her husband, the graphic artist Pál Kolozsváry. The couple eventually emigrated to California, where Kolosvary-Stupler pursued her education in the arts—first at El Camino Junior College and then earning an MFA from California State University, Long Beach, in 1980.

Though her early career focused on ceramics, where she gained international recognition, her later artistic practice expanded to include graphic arts, printmaking, and assemblage. She mastered the intaglio technique in the 1970s and became an influential figure in the Los Angeles art scene, serving as president of the Los Angeles Printmaking Society in 1980. Her work was widely exhibited, with numerous pieces entering significant institutional collections, including the Smithsonian.



Context and Legacy

Created in 1977, *Motherhood* belongs to a body of work in which Kolosvary-Stupler explored human intimacy through abstraction. At a time when artists were revisiting figuration through minimalist and symbolic forms, she offered a deeply personal interpretation of it. Her use of essential shapes—neither strictly anatomical nor decorative—carries emotional resonance, grounded in her own life story of survival, displacement, and maternal strength.

Collector's Note

As an Artist Proof, this lithograph offers a rare insight into Kolosvary-Stupler's conceptual process. The restrained palette, delicate texture, and symbolic density make *Motherhood* a quietly powerful piece, ideal for collectors interested in mid-century abstraction, feminist narratives, or post-war émigré art. Framed and presented with care, this work stands as both a tribute to the universality of motherhood and a testament to the enduring clarity of Kolosvary-Stupler's vision.

REFERENCE NUMBER: LU654316561582

PERIOD: 1970-1979

CONDITION: Excellent

MEASUREMENTS: Height: 24.75" Width: 21.5" Depth: 0.75"

COUNT: 1

MATERIAL: Lithograph

CREATOR: Eva Kolosvary-Stupler