



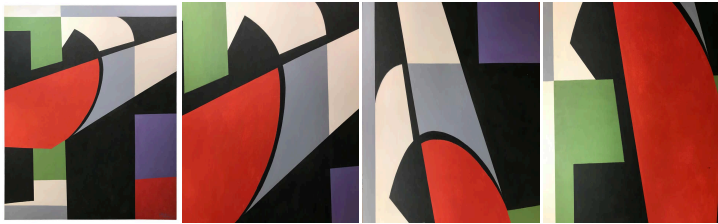
Hard Edge Abstract Multicolor Nonobjective  
Acrylic Painting signed F. Hartman

As low as **\$950**

In stock

**SKU**

LU825820808252



## Details

" Hard edge painting is an approach to abstract painting that became widespread in the 1960s and is characterized by areas of flat color with sharp, clear (or 'hard') edges. Jules Langsner, a known American Art critic wrote in 1959 " the forms are finite, flat, rimmed by a hard, clean edge. They are autonomous shapes, sufficient unto themselves as shapes" Although it was first identified with Californian artists, today the phrase is used to describe one of the most distinctive tendencies in abstract painting throughout the United States in the 1960s. This painting is a perfect sample of this movement. It is perfectly executed and is signed" F. Hartman" 1994, a nostalgic painter of this period!

REFERENCE NUMBER: LU825820808252

PERIOD: Late 20th Century

CONDITION: Good

MEASUREMENTS: Height: 51" Width: 51" Depth: 1.25"

COUNT: 1

MATERIAL: Acrylic, Canvas

COUNTRY OF ORIGIN: United States