



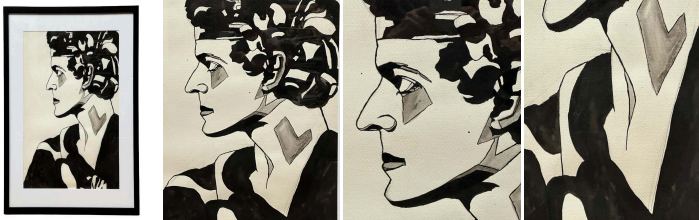
John Barrymore in Hamlet, Ink and Watercolor
Drawing Portrait

As low as **\$1,200**

In stock

SKU

LU825840607532



Details

The depiction of theatrical characters in the visual arts has long been a means of exploring the depths of human emotion and identity. In this black and white profile portrait of John Barrymore as Hamlet, the artist invites us to contemplate the duality of presence and absence, echoing the quintessential dilemma of Hamlet's existence.

The portrait is defined by a minimalist structure, close to soft expressionism, with thick lines, segmentations, and solid colors that suggest a fragmentation of identity, perhaps reflecting the divided nature of Shakespeare's character and Barrymore himself.

The painting hints at an inherent ambivalence, a characteristic also seen in expressionism, which mirrors Hamlet's fluctuating emotions as he wrestles with the nature of life and death, famously captured in his soliloquy "To be or not to be." The use of black, grey, and white, applied with almost surgical precision, gives the portrait a dramatic presence.

The choice of these colors has a profound impact on the viewer's engagement response. The monochrome scheme evokes mystery, emphasizing the contrast between light and shadow. By creating a sculptural effect, the artist encourages us to interpret the spaces between the lines as representations of the nuanced states between consciousness and oblivion.

As viewers, we are invited to engage visually and psychologically, participating in the character's journey. Barrymore's expression does not reveal explicit emotion but presents an enigma—an intangible paradox of human existence. It echoes our own confrontations with the profound questions of life, intertwining our destiny with that of Hamlet himself.



REFERENCE NUMBER: LU825840607532

PERIOD: Mid-20th Century

CONDITION: Excellent

MEASUREMENTS: Height: 30.33" Width: 24.66" Depth: 0.88"

COUNT: 1

MATERIAL: Paper

COUNTRY OF ORIGIN: United States