



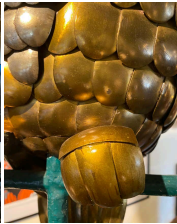
Large Modern Owl Sculpture on Hanging Perch  
by Sergio Bustamante

As low as **\$1,900**

In stock

**SKU**

LU825844174532



## Details

A celestial totem, this owl metal sculpture by Sergio Bustamante stands between ornament and allegory. Its structure is grounded in geometric simplicity: a ring of patinated green metal evokes ancient vegetation or the wear and tear of time. The circle—a symbol of eternal return and infinite knowledge—frames and elevates the owl's presence. Perched on a thin crossbar, the bird stares at the viewer with painted eyes, their spiraling, hypnotic contours. The green and gold of its gaze suggest a supernatural watchfulness, as though observing from an invisible realm. The beak, stylized and edged with orange and yellow hues, sharpens the bird's expressive aspect—both questioning and vigilant. Bright, colorful lines trace the contours of its face, echoing traditional motifs and reinforcing its archetypal character.

Hammered brass and copper, with dual patinas across the plumage, lend the piece a precious, artisanal quality. Each scale captures light differently, shifting between the matte patina of aged metal and the brilliance of sunlit gold. This contrast reinforces the owl's duality as a nocturnal creature that carries a hidden light. Suspended without casting shadows, the sculpture takes on a floating, and ritualistic appearance.

In this work,

Bustamante follows a lineage of symbolic representations where the owl—a messenger from the beyond and guardian of secrets—emerges as a transient and enigmatic figure. Under its magnetic gaze, the viewer is invited on an intimate journey that borders on the sacred. Frozen in its posture, the bird seems poised to impart ancient, silent, and enduring wisdom.



Sergio Bustamante is a renowned Mexican artist and sculptor, born in Culiacán, Sinaloa, in 1949. He has lived in Guadalajara since childhood. Initially studying architecture at the University of Guadalajara, Bustamante shifted his focus to fine arts, driven by his talent and passion for craftsmanship.

He began with paintings and papier-mâché figures, holding his first exhibition at Galería Misrachi in Mexico City in 1966. In the early 1970s, he traveled to Amsterdam to further refine his skills. Upon returning to Guadalajara, he co-founded the "Family Workshop Studio" in Tlaquepaque in 1975.

In the mid-1970s, Bustamante transitioned to sculptures in wood and bronze, often exploring animal themes. In 1979, he introduced innovative furniture designs, blending wood, glass, and bronze. The 1980s saw his expansion into ceramic sculptures, which allowed for new uses of color and form. In 1992, he began creating exquisite jewelry in bronze, gold, and silver, incorporating animal motifs. That same year also marked the return of his papier-mâché sculptures.

Bustamante's work continues to evolve, with each piece being a hand-crafted, limited-edition creation, ensuring every work is unique. His sculptures, ranging from small pieces to works as large as four meters, are highly regarded worldwide and have been selected by the Mexican government as official gifts for dignitaries. Since the 1960s, his international recognition has grown steadily, with his art sought after in countries such as Mexico, the United States, Japan, Europe, and Russia. The value of his works has consistently increased over the years.

REFERENCE NUMBER: LU825844174532

PERIOD: 1970-1979

CONDITION: Good

MEASUREMENTS: Height: 31" Width: 28" Depth: 10"

COUNT: 1

MATERIAL: Brass, Copper, Metal

CREATOR: Sergio Bustamante (Designer)

COUNTRY OF ORIGIN: Mexico