

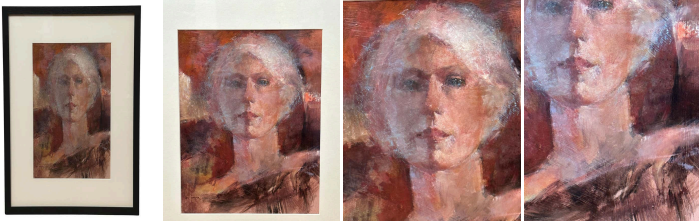
Mesmerising Woman Portrait - Gouache by Max Turner

As low as **\$550**

In stock

SKU

LU654312457052



Details

Max Turner's world revolves around the visage. Even though he considers himself a sculptor today, Turner presents us with astonishing portraits, whether charcoal head studies or through the medium of gouache and oil.

This gouache captures a silver-haired woman with a graceful oval face. Max Turner has a very special manner of capturing the gaze of his models, always activating varied reactions from viewers. In this portrait, the gaze is almost blurred as if the model was lost in her thoughts. Eyes are not defined as tied to one expression, one state of emotion, but rather to a mystery that emerges from it. The work is precise, and upon approaching the paint, one can notice the large traces left by the brush. While the model's identity remains unknown, the delicate and soft colour palette of pinks and browns invites a gentle interpretation, allowing each observer to deepen his connection with the artwork on an emotional and personal level.

Max Turner, born in 1925 in Omaha, Nebraska, had a remarkable artistic journey. After serving in the U.S. Navy during World War II, Max settled in Southern California and pursued a career in silkscreen work. An encounter with artist Hal Reed changed his path as Max joined an art class taught by Reed and became friends. Impressed by Max's talent, Hal offered him a teaching position. Max's passion for painting and sculpting grew, with his portraits drawing comparisons to Nicolai Fechin's work.

In his 70s, Max focused solely on sculpting, creating about 100 full-size sculptures sold to prestigious clients and Hollywood studios. He continued teaching painting classes at the California Art Institute alongside renowned artists. Max



authored several books showcasing his drawings and paintings, highlighting his mastery of capturing human expression.

His works continue to be cherished by art enthusiasts, leaving a lasting impact.

REFERENCE NUMBER: LU654312457052

PERIOD: Mid-20th Century

CONDITION: Excellent

MEASUREMENTS: Height: 21.38" Width: 17.25" Depth: 0.5"

COUNT: 1

MATERIAL: Gouache

CREATOR: Max Turner (Painter)