



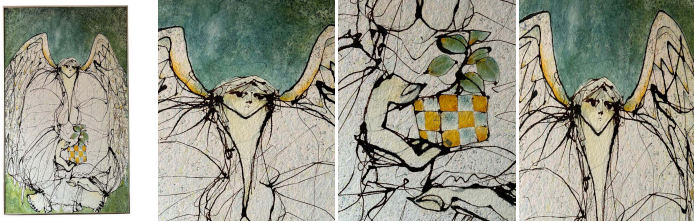
"The Angel of Hope" Acrylic Painting on Canvas
by Unknown Artist

As low as **\$1,300**

In stock

SKU

LU825837746932



Details

"The Angel of Hope" is an unsigned painting drawing inspiration from art movements like primitivism and symbolism. The artist used very fine black lines, resembling loose hair, to create a crackled effect in the painting, shaping the composition.

An angel occupies almost all the space. Usually, celestial beings with wings are depicted as slender, fairy-like creatures. This one resembles an ogre with a small head, not the scary figure from children's stories. It's not about little children being consumed, but about what the angel has swallowed, which could correspond to the entire misery in the world—wars, morbid impulses, fears, anger, everything that vibrates negatively, everything that humans destroy.

This is not a somber painting; it is optimistic. Though filled with all the ugliness of human patterns, the angel holds a form like a two-tone Rubik's cube. The Rubik's cube, a puzzle that spread around the world in the '80s, symbolizes the hope of that era. A small plant sprouts and grows on top of this cube, representing the natural and simple beauty and innocence that could save the planet from a suffering world. The angel's gaze is somewhat melancholic, but it looks straight into our eyes without tears. Two fingers of its hand are clearly outlined, holding and offering to us the cube and the tiny sprout. The angel's wide feet could be seen as the artist's intention to show us the necessary qualities to be fully present in this life—anchoring, rootedness, and integration—for a human experience respecting what we call Mother Earth and Mother Nature. Stronger and more rooted, we will have fewer fears and more respect.

Through his compassion, the artist depicted an angelic messenger on a guiding mission on Earth to assist humanity in its quest to experience love on a universal scale, despite the limitations of ego-based identity and the atrocities of the world.



REFERENCE NUMBER: LU825837746932

PERIOD: Late 20th Century

CONDITION: Excellent

MEASUREMENTS: Height: 40.25" Width: 30.25" Depth: 1.5"

COUNT: 1

MATERIAL: Acrylic, Canvas, Painted

COUNTRY OF ORIGIN: United States