



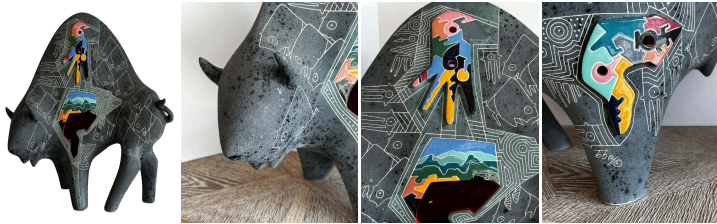
"The Buffalo" Modern Geometric Ceramic Sculpture by Gene and Rebecca Tobey

As low as **\$2,600**

In stock

SKU

LU825833615022



Details

This piece by Gene and Rebecca Tobey is a stunning Black Buffalo ceramic sculpture. In Native American cultures, the buffalo stands for the sacredness of life. Often associated with the earth and the natural world, the animal is viewed as a powerful spiritual force that can bring balance and harmony to human life.

This sculpture plays with opposites, between gloss and matte, between the coupling of grey and white and colour. The body of the buffalo presents a colourful hand on its upper part that points towards the belly of the animal features where we find an opening akin to a crater. The glossy, radiant red colour of the animal's insides evokes a sense of intensity and vitality, more lifeblood than pain. The buffalo's body features graffiti, in the reminiscent style of prehistoric drawings, adding depth and richness to the artwork and connecting it to both artistic and historical contexts of Native American legends.

Gene and Rebecca Tobey worked together for over two decades as artistic partners and a married couple before Gene passed away. They created a unique style of ceramic and bronze sculptures that featured animal forms and displayed a distinctive artistic signature.

Rebecca currently resides in New Mexico, which is often called the "Land of Enchantment." This mystical land fosters an inspiring environment for folk artists to explore their timeless narratives through symbolic paintings and sculptures. Those who are spiritually attuned and visit the area can testify to its powerful vibrations, capable of transcending ordinary perceptions of reality and elevating one's consciousness.



In this mystical land, the natural world is seen as a multidimensional and interconnected reality. The Tobey's animal sculptures tell stories that transcend time, encapsulated in symbols, and reflect this interconnectedness.

REFERENCE NUMBER: LU825833615022

PERIOD: 1980-1989

CONDITION: Excellent

MEASUREMENTS: Height: 22.38" Width: 21.5" Depth: 12"

COUNT: 1

MATERIAL: Ceramic, Moulded

CREATOR: Gene and Rebecca Tobey

COUNTRY OF ORIGIN: United States