



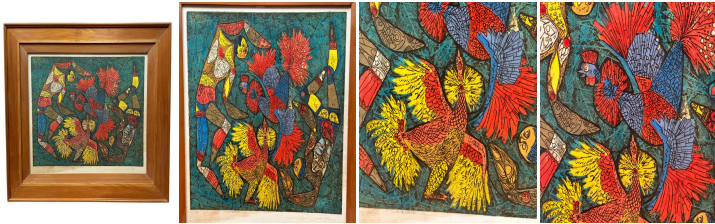
"Transformation" Symbolic Colorfoul Artist Proof Etching

As low as **\$750**

In stock

**SKU**

LU825835275412



## Details

At first glance, this colourful etching reveals a mirrored structure, two figures, and two roosters, almost identical and reflecting each other. And it's in the "almost" that the artist's magic and creativity operate. The figures' bodies are simplified as if cut from paper, with their arms and legs' extremities turned into triangular points. Within the shapes the artist gives, colours are enriched by other drawings, such as prehistoric cave graffiti, ancient languages, codes, and marks.

One features a visible central heart, the other a ribcage suggesting the presence of a water element. The work is both aesthetic and questioning, as each new observation reveals additional details rich in symbolism.

It sits in its original thick wood frame.

The etching is signed, but the artist cannot be identified. It is likely by an artist with roots in Asia. The roosters are transforming into phoenixes by the shape of their wings. Their human figure faces are very expressive. They are in motion and central to the work, characterised by their power to be reborn after being consumed by their heat. As phoenixes, they symbolise the cycles of death and resurrection.

This etching is an artist's proof, signed and dated on the back.

The minimalist signature does not allow us to read the signature of the painter (as well as the title) but the person who sold it to me said he was a Filipino artist.

REFERENCE NUMBER: LU825835275412



---

CONDITION: Good

MEASUREMENTS: Height: 30.5" Width: 35" Depth: 1.5"

COUNT: 1

MATERIAL: Paper

COUNTRY OF ORIGIN: Philippines