



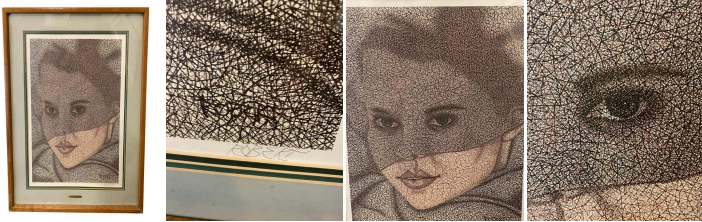
"Under the Veil" Midcentury Portrait Lithograph
by Robert

As low as **\$950**

In stock

SKU

LU654316074152



Details

Robert constructs his portraits from an interlacing of short, tight, tangled strokes, drawn with meticulous regularity. The drawing does not follow a continuous line: it is composed of intersections, multiple cracks, and repetitions. The color follows the same principle: never spread, always fragmented. Shadows are formed by superposition, density, and approximation. The spectators participate in the work of construction—they recompose, they search.

In "The Woman and Her Veil", the gaze is less frontal than in "Gypsy", but just as incisive. The figure is in three-quarter view, the gaze shifts to the side. This is enough to introduce a form of movement, of softness. The mouth, barely open, becomes an anchor point. This is where the light falls. The veil acts as a filter, an intermediate layer between the image and us.

REFERENCE NUMBER: LU654316074152

PERIOD: Late 20th Century

CONDITION: Good

MEASUREMENTS: Height: 31" Width: 25" Depth: 1.25"

COUNT: 1

MATERIAL: Lithograph

CREATOR: Richard Proctor