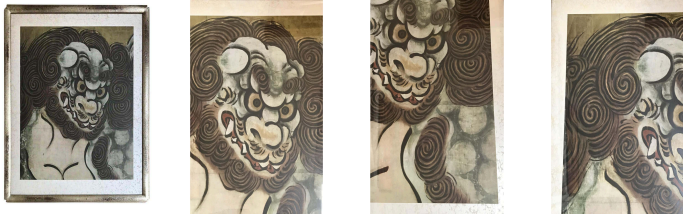


Woodblock of Karashishi Litograph by Kano Eitoku, Kano School

As low as **\$480**

In stock
SKU
LU65436918032



Details

Karashishi was a lion protector in Japanese Buddhism and Shintoism.

They originated in China, shi, meaning lion.

Kano Eitoku (1543-1590) was a Japanese painter of the Azuchi- Momoyama period. Working in the bold, colorful style typical of the decorative screen painting of the 16th century, he was the leading artist of his day and one of the most influential Japanese painters.

He founded the Kano school which trained painters who became very known.

This lithograph has been composed by selecting a part of the original screen which is in the Museum of Imperial collections. Its simplified composition concentrating on the oversized and fierce beast reflects the heroic spirit of the Momoyama period.

Kan Eitoku is representative of the academic Kano School which had followed traditional methods since the sixteenth century.

Talented enough to grasp the spirit of the age, however he created a new and powerful style as typified by this work.

REFERENCE NUMBER: LU65436918032

PERIOD: 16th Century

CONDITION: Good

MEASUREMENTS: Height: 18" Width: 16" Depth: 1.91"

COUNT: 1

MATERIAL: Lithograph

CREATOR: Kano Eitoku (Artist)
Copyright by Galerie Sommerlath - All
Rights Reserved

